



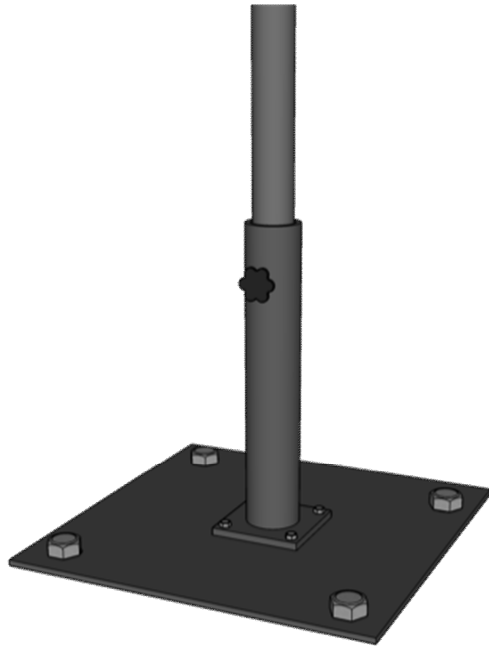
# BASES

---

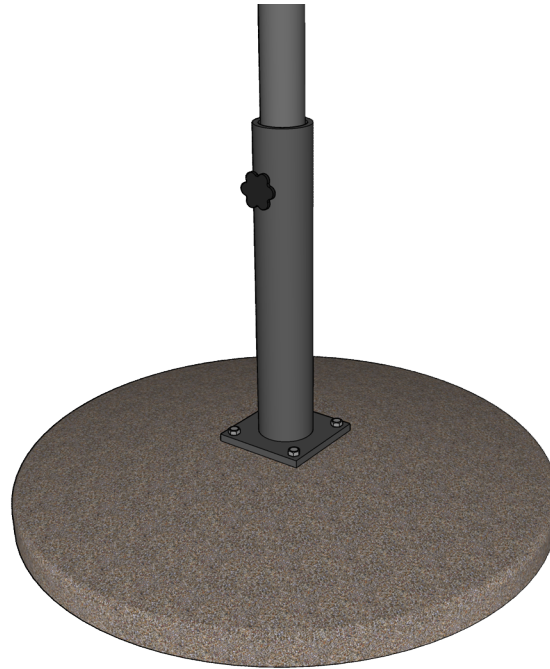
# BAHAMA



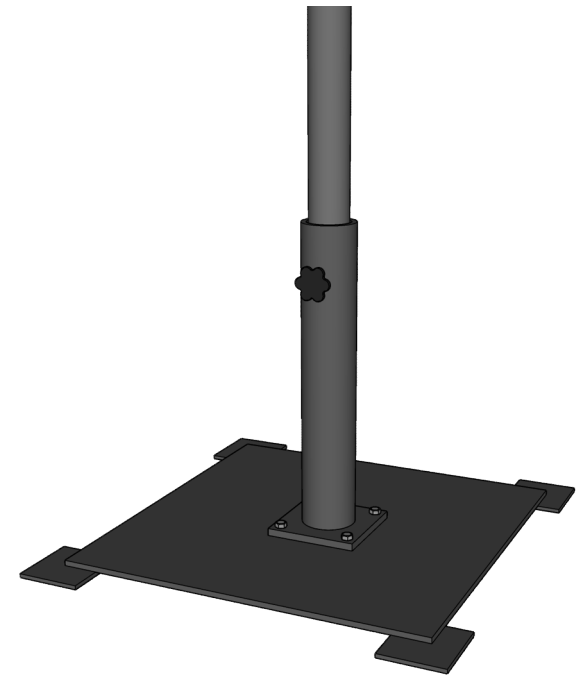
*Surface Mount*



*Italian Pebble Stone*



*Above Ground - Metal Plate*



BASE	SPECS		BASE	SPECS	
INGROUND BASE	18" x 18" x 6"	46 x 46 x 15cm	BASE COUNTERWEIGHT	130 – 550lbs	60 - 250 kgs
ITALIAN PEBBLE STONE	24"	60cm			
METAL STAND	18" x 18"	45 x 45cm			