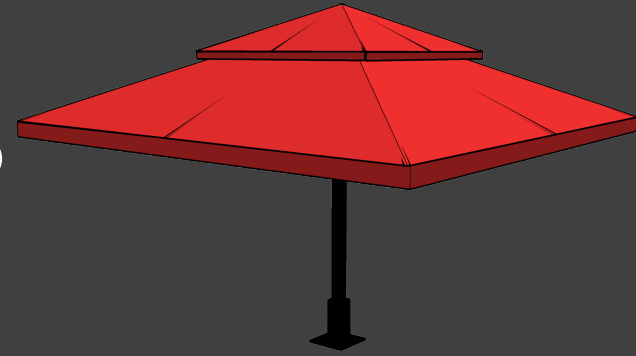


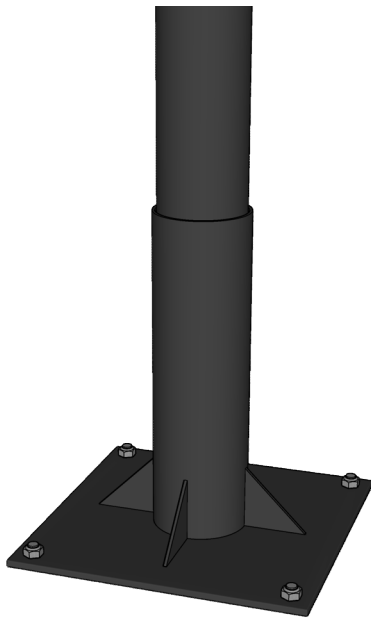


BASES - OPTIONS

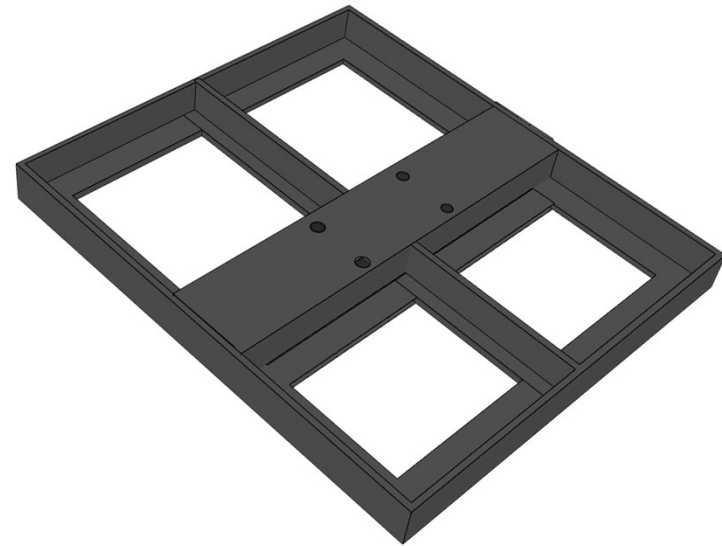
TELESCOPIC



Inground / Surface Mount



Freestanding Base



BASE	SPECS		BASE	SPECS	
INGROUND BASE	18"(W) x 18"(L) x 6"(H)	46 x 46 x 15cm	FREESTANDING BASE	41" x 47" (10'X13' & 13'X13')	104 x 120cm
SURFACE MOUNT	18" x 18"	46 x 46cm	BASE COUNTERWEIGHT	1100 – 1650 lbs.	500– 750 kgs